

How To Use The IP Command

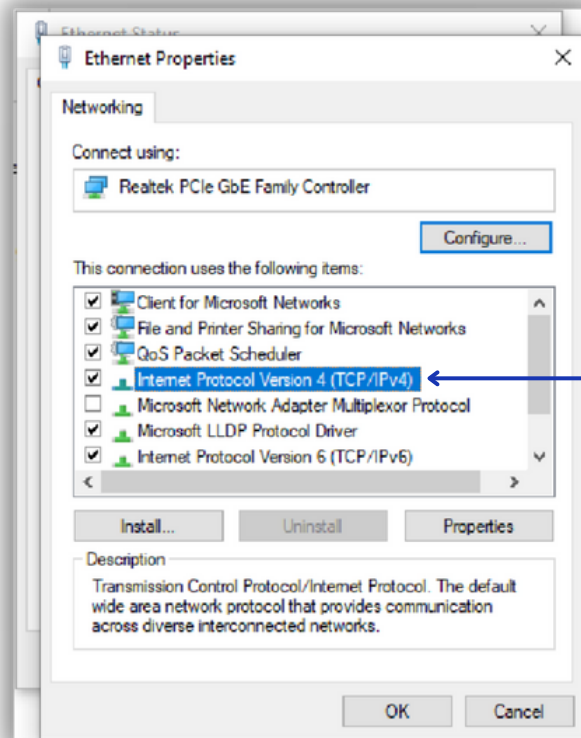
How to use IP Command

```
Administrator: Command Prompt
Microsoft Windows [Version 10.0.19043.1466]
(c) Microsoft Corporation. All rights reserved.
C:\Windows\system32>Ping 192.168.1.50
Pinging 192.168.1.50 with 32 bytes of data:
Reply from 192.168.1.50: bytes=32 time=9ms TTL=128
Reply from 192.168.1.50: bytes=32 time=2ms TTL=128
Reply from 192.168.1.50: bytes=32 time=2ms TTL=128
Reply from 192.168.1.50: bytes=32 time=2ms TTL=128
Ping statistics for 192.168.1.50:
    Packets: Sent = 4, Received = 4, Lost = 0 (0% loss),
    Approximate round trip times in milli-seconds:
        Minimum = 2ms, Maximum = 9ms, Average = 3ms
C:\Windows\system32>
```

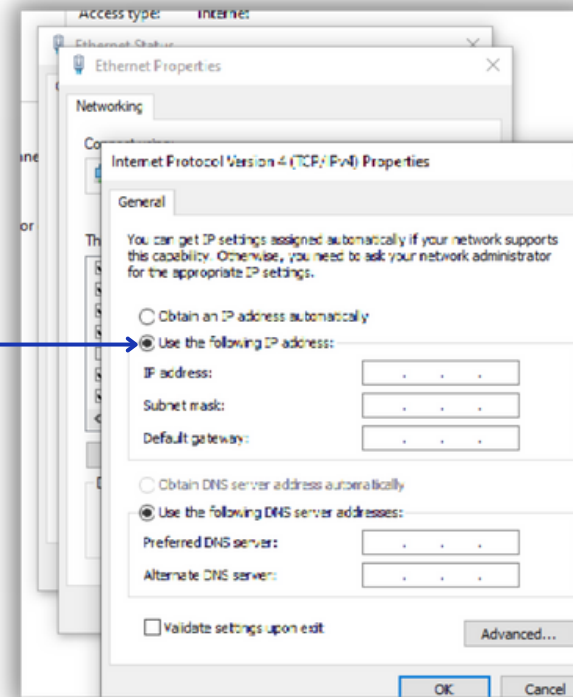
Type "Ping" and IP Address

```
Select Administrator: Command Prompt
Microsoft Windows [Version 10.0.19043.1466]
(c) Microsoft Corporation. All rights reserved.
C:\Windows\system32>ping 192.168.0.10
Pinging 192.168.0.10 with 32 bytes of data:
Request timed out.
Request timed out.
Request timed out.
Request timed out.
Ping statistics for 192.168.0.10:
    Packets: Sent = 4, Received = 0, Lost = 4 (100% loss),
C:\Windows\system32>
```

How to use IP Command



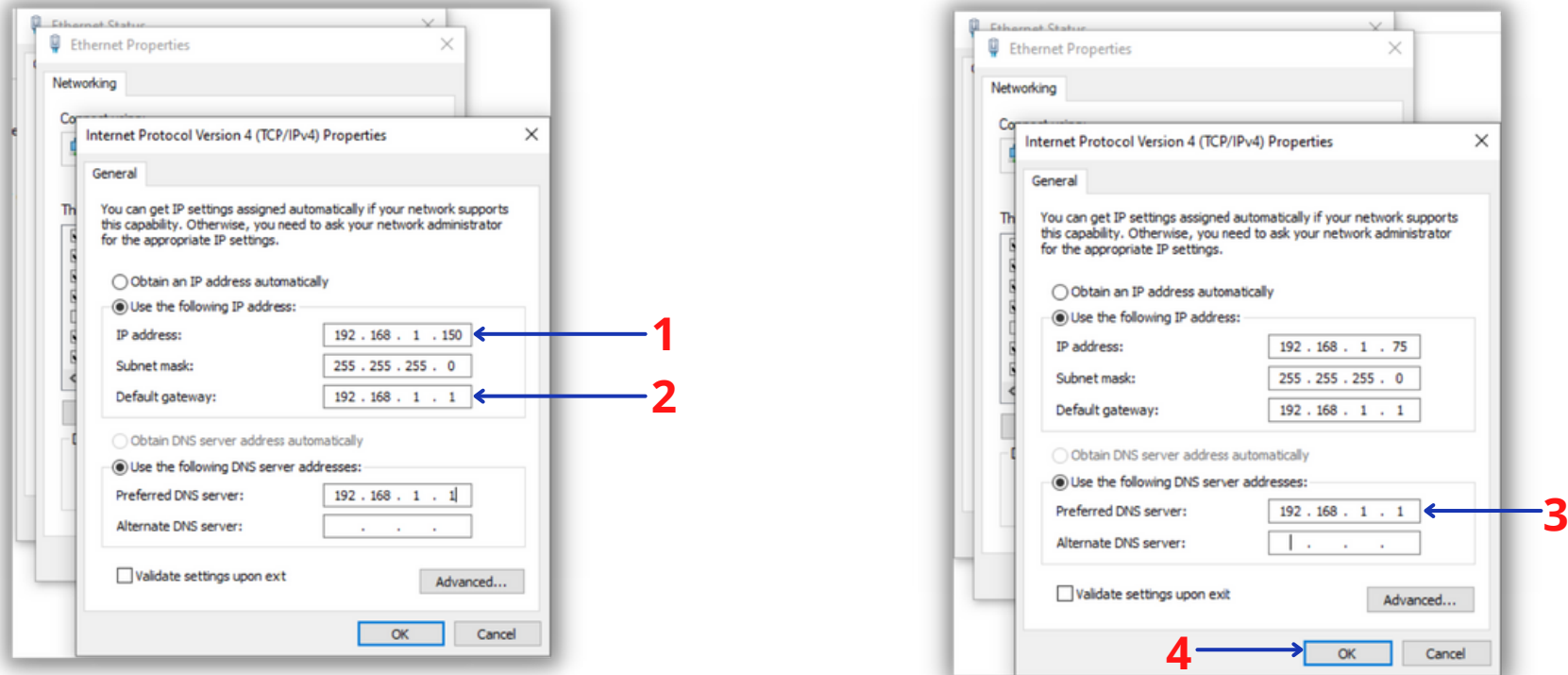
2



1 → Double Enter In Internet Protocol Version 4 (TCP/IPv4)

2 → Click & Use The Following IP Address

How to use IP Command



1 → Enter The IP Address You Want To Set

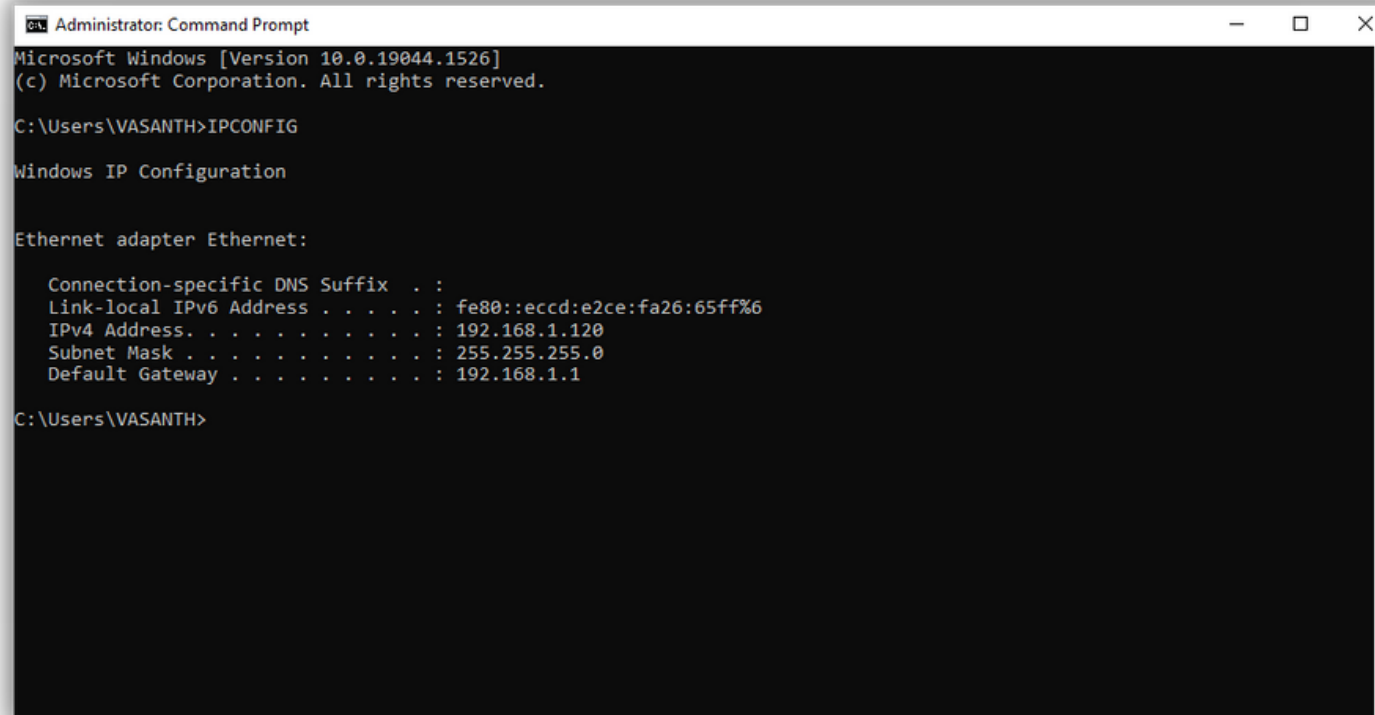
2 → Enter The Default Gateway

3 → Enter The Preferred DNS Server

4 → Click Ok

How to use IP Command

Step2:Now Check In command prompt if IP Address is changed



```
Administrator: Command Prompt
Microsoft Windows [Version 10.0.19044.1526]
(c) Microsoft Corporation. All rights reserved.

C:\Users\VASANTH>IPCONFIG

Windows IP Configuration

Ethernet adapter Ethernet:

    Connection-specific DNS Suffix  . : 
    Link-local IPv6 Address . . . . . : fe80::eccd:e2ce:fa26:65ff%6
    IPv4 Address. . . . . : 192.168.1.120
    Subnet Mask . . . . . : 255.255.255.0
    Default Gateway . . . . . : 192.168.1.1

C:\Users\VASANTH>
```

Type "IPCONFIG" In CMD Window and Click Enter. When It Shows the newly Changed IP Address, the Static IP Address setting process is completed successfully.